

A vertical grey bar on the left side of the slide.

Nitesh Estates Ltd.  
Corporate Presentation

A vertical yellow bar on the left side of the slide.

2018

# Index

---

1. Nitesh Estates: An Introduction
2. Our Brand
3. Awards
4. Our Business Principles
5. Our Partners
6. Board of Directors and Management Team
7. Lines of Business
8. Our Portfolio
9. In Press
10. Testimonials
11. Celebrities We are Associated with
12. Corporate Social Responsibility



# Index

---

1. **Nitesh Estates: An Introduction**
2. Our Brand
3. Awards
4. Our Business Principles
5. Our Partners
6. Board of Directors and Management Team
7. Lines of Business
8. Our Portfolio
9. In Press
10. Testimonials
11. Celebrities We are Associated with
12. Corporate Social Responsibility

## Who we are?

- A **first generation Real Estate company**, founded in 2004 by Mr. Nitesh Shetty.
- One of **India's most well recognized** luxury real estate brands.
- Reputation for superior quality properties distinguished by sophisticated design.
- Asset Classes: **Hotels, Homes, Office Buildings and Shopping Malls.**

# Nitesh Estates

---



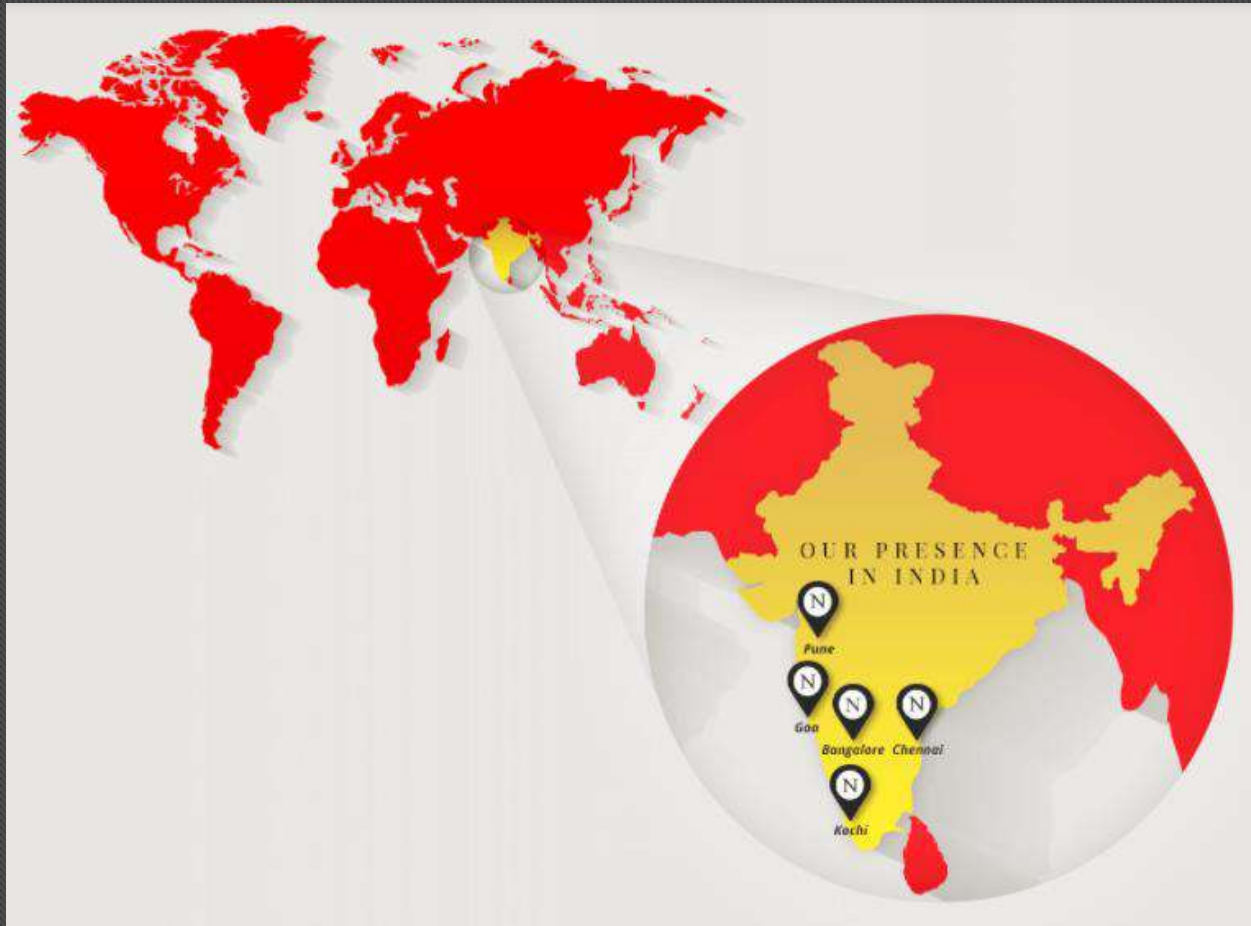
Nitesh Garden Enclave – ITC Homes

## What we do?

- We **develop, acquire and invest** in Homes, Hotels, Office buildings and Shopping Malls.
- Since our inception, we have brought 19 million sft area under various stages of development.
- Presence in Bangalore, Goa, Pune, Chennai and Kochi.

# Nitesh Estates

---



# Nitesh Estates

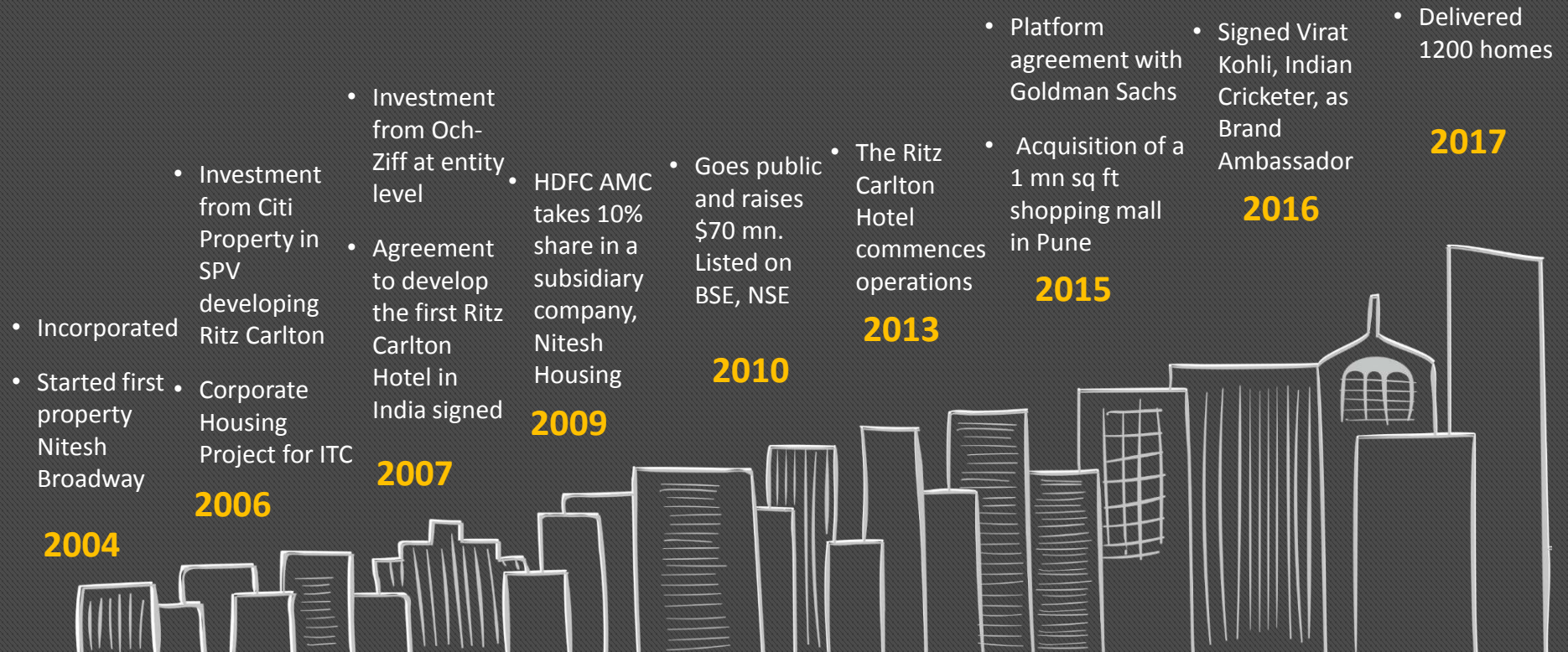
---



India's first Ritz-Carlton Hotel



## Our Journey



## Our Strengths



Strong Brand



Global Architecture



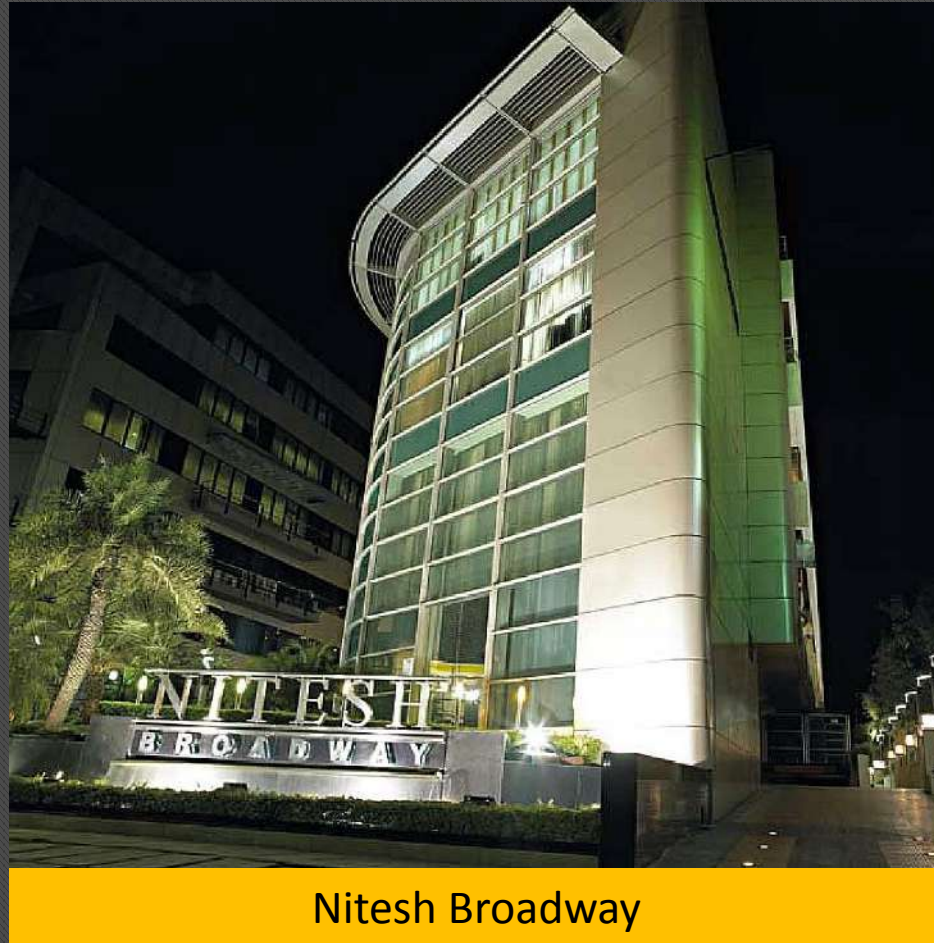
Professional Team



Ability to Execute

# Nitesh Estates

---



Nitesh Broadway

# Index

---

1. Nitesh Estates: An Introduction
2. **Our Brand**
3. Awards
4. Our Business Principles
5. Our Partners
6. Board of Directors and Management Team
7. Lines of Business
8. Our Portfolio
9. In Press
10. Testimonials
11. Celebrities We are Associated with
12. Corporate Social Responsibility



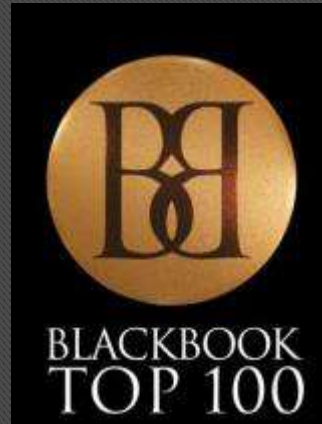
## Strong Brand



- Nitesh Estates is today one of **India's most recognized luxury brands**.
- **"Expect More"** - The act of doing that little extra in each development – "Expect More" defines the promise of the brand.

# Nitesh Estates

---



**Nitesh Estates voted as one of  
“Indian Luxury’s most influential  
Brand” – Blackbook Top 100**



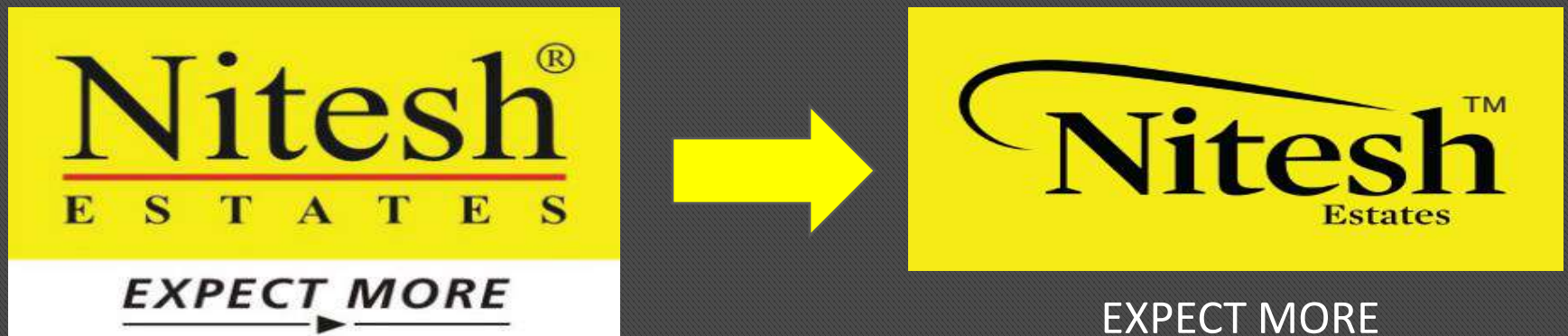
# Nitesh Estates

---



**Brand Ambassador – Virat Kohli (Captain - Indian Cricket Team)**

## Rebranding Exercise



- The arc above the name is intended to symbolize a structure you would be familiar with in real-estate development. This roof-like shape adds a modern flare to the traditional serif typography.
- Rebranding exercise was carried out recently to create a differentiated look that stands out from the competitive outlook.



# Nitesh Estates

---



Nitesh Buckingham Gate

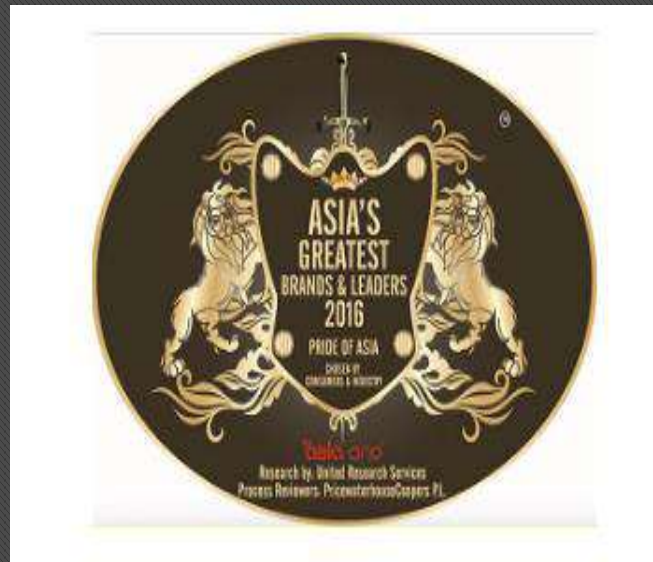
# Index

---

1. Nitesh Estates: An Introduction
2. Our Brand
3. **Awards**
4. Our Business Principles
5. Our Partners
6. Board of Directors and Management Team
7. Lines of Business
8. Our Portfolio
9. In Press
10. Testimonials
11. Celebrities We are Associated with
12. Corporate Social Responsibility

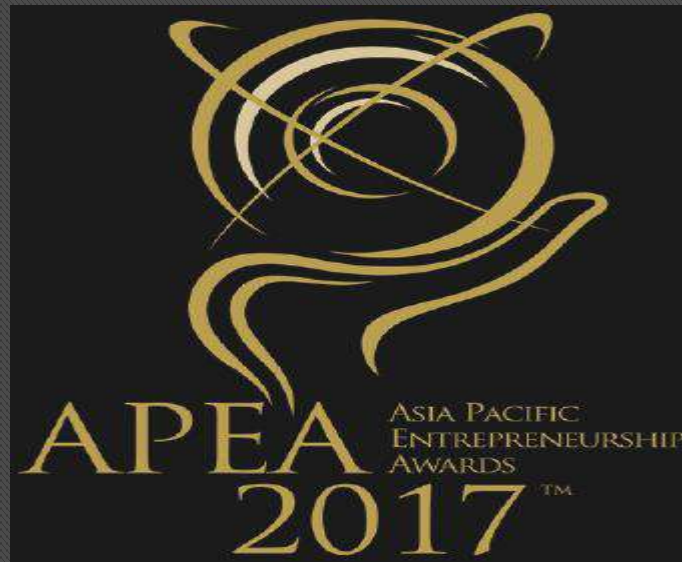


## Awards



**Nitesh Estates won the title of Asia's greatest Brands & Leader 2016 – Audited by PwC**

## Awards



**Asia Pacific Entrepreneurship Awards 2017 India –  
Mr. Nitesh Shetty – Property Development Industry**

## Awards

The Forbes logo is displayed in white, serif font on a black rectangular background.

Nitesh Estates has been featured in **Forbes “Treasure Hunt”** among the Top 10 stories of successful businesses that were never on anyone’s radar.



## Awards



**Asia Pacific Property & Hotel Awards 2017 - Nitesh Park Ave  
– Architecture Multiple Residence India**

## Awards



**Ashwini Kumar – COO Receiving CNBC Real Estate Awards for Nitesh Garden Enclave, Bangalore in the Best Luxury Segment Residential Property in India**

# Nitesh Estates

---

## Awards



Asia's most promising brand 2014





# Index

---

1. Nitesh Estates: An Introduction
2. Our Brand
3. Awards
4. **Our Business Principles**
5. Our Partners
6. Board of Directors and Management Team
7. Lines of Business
8. Our Portfolio
9. In Press
10. Testimonials
11. Celebrities We are Associated with
12. Corporate Social Responsibility



## Our Business Principles

- Our foremost goal is to construct/create the best quality buildings which can be benchmarked against the best real estate developments globally.
- Our client's interest always comes first. Our experience shows that if we serve our clients well, our own success will follow.
- Our assets are our people, brand and reputation. If any of these is ever compromised, the last is the most difficult to restore.
- At Nitesh Estates Environment, Health and Safety is a standard which is at the heart of our business.

# Nitesh Estates

---



# Index

---

1. Nitesh Estates: An Introduction
2. Our Brand
3. Awards
4. Our Business Principles
5. **Our Partners**
6. Board of Directors and Management Team
7. Lines of Business
8. Our Portfolio
9. In Press
10. Testimonials
11. Celebrities We are Associated with
12. Corporate Social Responsibility



---

# Global Architects and Designers



# Global Architects and Designers



## **Global Architects and Designers**

Firmly entrenched in its belief in optimum designs for all its homes, office buildings, hotels and shopping malls, Nitesh Estates has been among India's first few companies to recognize the importance in design and development through internationally renowned architectural firms.

## Global Architects and Designers

- Kohn Pedersen Fox Associates
- Super Potato
- Callison
- Warner Wong Design
- Wimberly Allison Tong and Goo
- Belt Collins
- P Landscape
- ILD SFO
- Meinhardt
- Wilson Associates
- ESPA Consultants
- IBI Group Toronto





---

## Media and Creative Partners

# Media and Creative Partners

The logo for groupm, featuring the word "group" in a dark blue sans-serif font and "m" in a light blue script font.The logo for vgc, with "vgc" in a white serif font on a dark grey background. A small gold dot is positioned above the letter "o".The logo for WPP, consisting of the letters "WPP" in a black serif font on a white background.The logo for Publicis Worldwide, featuring a stylized sun with a face on the left and the word "publicis" in a red serif font on the right. Below "publicis" is the word "WORLDWIDE" in a smaller, red, all-caps sans-serif font.

---

# Business Partners

## Business Partners

**Goldman  
Sachs**

APOLLO



THE RITZ-CARLTON



## Business Partners

ESPA

ROSSANO  
FERRETTI  
HAIR & SPA



  
CORENET  
GLOBAL

 Urban Land  
Institute

# Nitesh Estates

---



**Mr. Deepak Parekh, Chairman HDFC at  
The Ritz-Carlton Bangalore**

---

## Lending Partners

## Lending Partners





---

# Consulting Partners



## Consulting Partners

**BAIN & COMPANY**

**accenture**consulting



---

# Audit Partners

## Audit Partners



**Deloitte.**



**pwc**



**KPMG**



**RAY & RAY**



**EY**

Building a better  
working world

---

# Construction Partners



## Construction Partners

1. Larsen and Toubro



2. Simplex



3. NCCCL



4. Al Fara'a



---

# Leasing Partners

## Leasing Partners



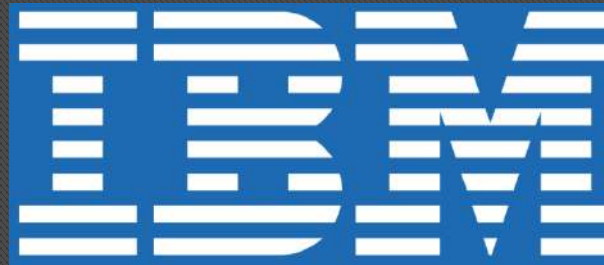


---

## Technology Partners



## Technology Partners



# Nitesh Estates

---



Nitesh Lexington Avenue

# Index

---

1. Nitesh Estates: An Introduction
2. Our Brand
3. Awards
4. Our Business Principles
5. Our Partners
6. **Board of Directors and Management Team**
7. Lines of Business
8. Our Portfolio
9. In Press
10. Testimonials
11. Celebrities We are Associated with
12. Corporate Social Responsibility



---

## Board of Directors

# Board of Directors

---



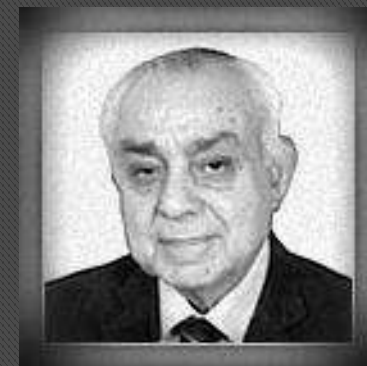
**Nitesh Shetty**  
Chairman &  
Managing Director



**L.S. Vaidyanathan**  
Executive Director



**Ashwini Kumar**  
Executive Director & Chief Operating  
Officer



**Jagdish Capoor**  
Independent Director  
*Ex-Chairman, HDFC Bank*



**G. N. Bajpai**  
Independent Director  
*Ex-Chairman, SEBI*



**Dipali Khanna**  
Independent Director  
*Financial Advisor*



**Mahesh Bhupathi**  
Independent Director  
*International Tennis Player*

# Board of Directors - Independent

---



**Jagdish Capoor**  
Independent Director  
*Ex-Chairman, HDFC Bank*



**G. N. Bajpai**  
Independent Director  
*Ex-Chairman, SEBI*



**Dipali Khanna**  
Independent Director  
*Financial Advisor*



**Mahesh Bhupathi**  
Independent Director  
*International Tennis Player*



---

## Advisory Board



# Advisory Board

---



**Ashok Aram**  
Managing Director  
Deutsche Bank



**Rangaswamy Iyer**  
Ex Managing Director  
Wyeth Ltd.



**James Brent**  
Former Global Head and Chairman  
Real Estate and Lodging Investment  
Bank

---

# Management Team

# Management Team

---



**Nitesh Shetty**  
Chairman &  
Managing Director



**L.S. Vaidyanathan**  
Executive Director



**Ashwini Kumar**  
Executive Director & Chief Operating  
Officer



**M.A. Venkateshan**  
Chief Financial Officer



**Pradeep Narayan**  
EVP – Sales, Marketing



**Shantanu Karkun**  
President - Projects



**Jayaram N**  
Head – HR & Administration



**Sunitha George**  
Vice President - CRM



# Management Team

---



**Srinivasan D.**

Company Secretary & Chief Compliance Officer



**Reghunadhan Pillay**

Vice President - Legal



**Shresh Mishra**

Senior General Manager –  
Nitesh Hub, Pune



**Ashok P C**

Finance Controller – Hospitality &  
Retail



**Antony Page**

General Manager  
Ritz-Carlton



**Subramaniam G**

Head - Treasury



**P V Narasimha Rao**

Head – Internal Audit



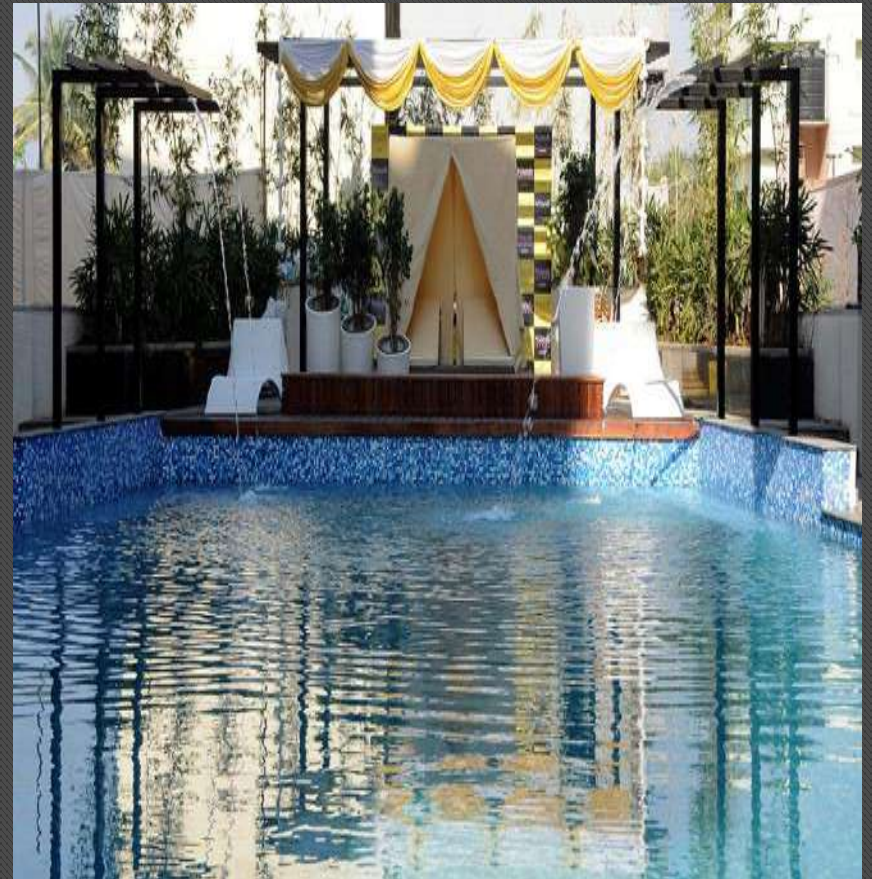
**Ganapathi Joshy**

Head – Corporate Affairs



# Nitesh Estates

---



Nitesh Central Park

# Index

---

1. Nitesh Estates: An Introduction
2. Our Brand
3. Awards
4. Our Business Principles
5. Our Partners
6. Board of Directors and Management Team
7. **Lines of Business**
8. Our Portfolio
9. In Press
10. Testimonials
11. Celebrities We are Associated with
12. Corporate Social Responsibility

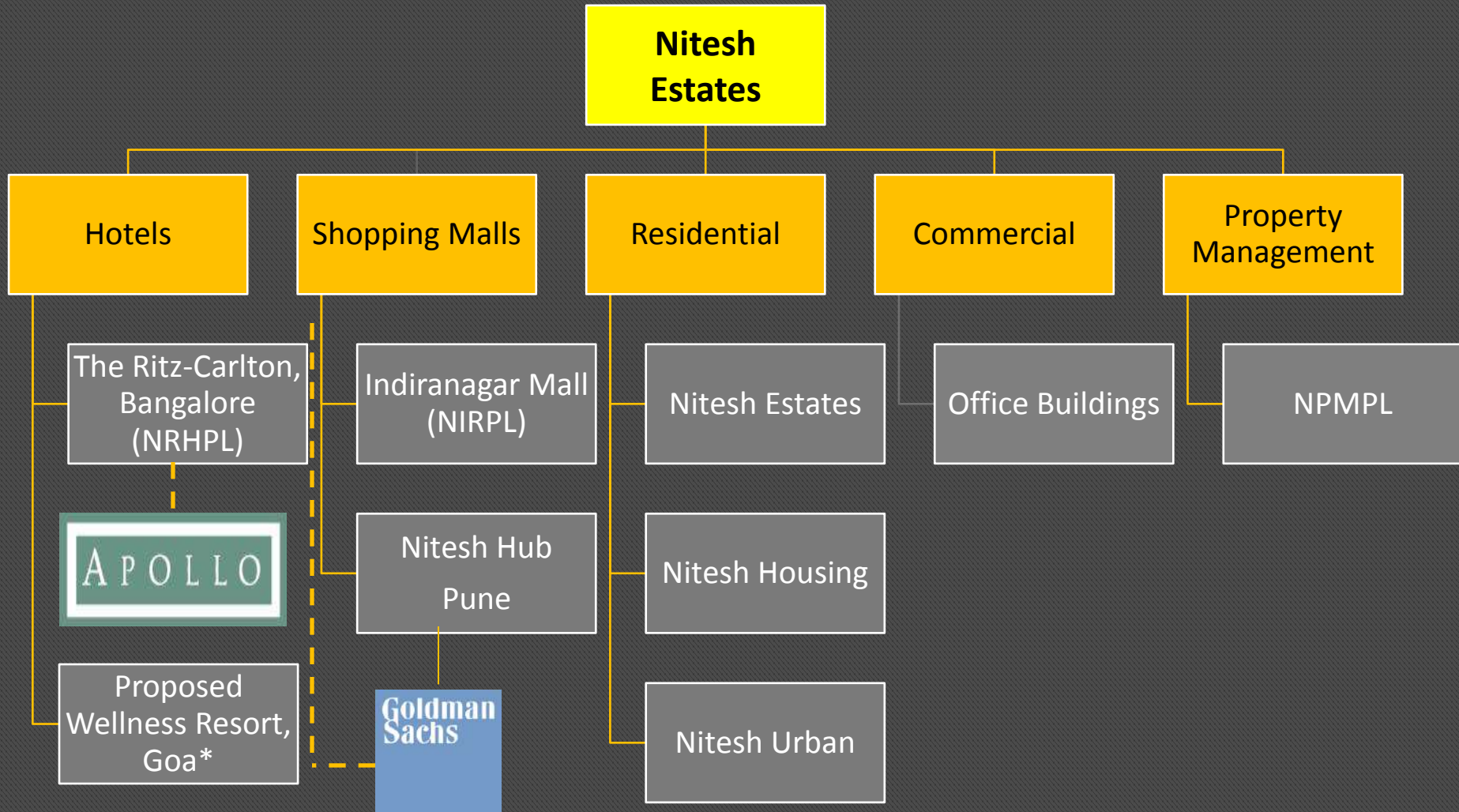


---

## Current Line of Business



# Current Lines Of Business





---

## **Proposed New Lines of Business**



# Proposed New Lines Of Business in Future

---

**Nitesh  
Estates**

```
graph TD; A[Nitesh Estates] --- B[Self-Storage]; A --- C[Warehousing]; A --- D[Amusement Parks]; A --- E[Data Centers]; A --- F[Student Housing]; A --- G[Hospitals];
```

Self-Storage

Warehousing

Amusement  
Parks

Data Centers

Student  
Housing

Hospitals



# Index

---

1. Nitesh Estates: An Introduction
2. Our Brand
3. Awards
4. Our Business Principles
5. Our Partners
6. Board of Directors and Management Team
7. Lines of Business
8. **Our Portfolio**
9. In Press
10. Testimonials
11. Celebrities We are Associated with
12. Corporate Social Responsibility



---

# Commercial Portfolio



# Commercial Portfolio

---



**Project:** Nitesh Chelsea  
**Location:** Hosur road  
**Area:** 0.42 Mn Sqft  
**Asset Class:** Grade A Office Building



**Project:** Nitesh Plaza  
**Location:** Ali Asker road, Central Business District  
**Area:** 0.38 Mn Sqft  
**Asset Class:** Grade A Office Building

# Commercial Portfolio

---



Project: Nitesh Soho  
Location: Commissariat road, Central Business District  
Area: 0.35 Mn Sqft  
Asset Class: Grade A Office Building



Project: Nitesh Tribeca  
Location: Vibuthipura  
Area: 0.39 Mn Sqft  
Asset Class: Grade A Office Building

---

# Residential Portfolio

# Luxury Residential – Central Business District (CBD)



1

Project: Nitesh Park Avenue,  
Location: ankey Road  
Area: 0.15 Mn Sqft



2

Project: Nitesh Logos  
Location: Aga Abbas Ali Road  
Area: 0.01 Mn Sqft



3

Project: Nitesh Knightsbridge  
Location: Sadashivnagar  
Area: 0.05 Mn Sqft



4

Project: Nitesh Madison Square  
Location: Cunningham Road  
Area: 0.05 Mn Sqft





# Luxury Residential – Villa Development

---



Project: Nitesh Napa Valley  
Location: Yelahanka  
Area: 0.54 Mn Sqft



# Nitesh Napa Valley

---



# Premium Residential

---



Project: Nitesh Rio  
Location: Kanakpura Road  
Area: 0.28 Mn Sqft



Project: Nitesh Cape Cod  
Location: Bellandur  
Area: 0.69 Mn Sqft



Project: Nitesh Virgin Island  
Location: Old Madras Road  
Area: 1.13 Mn Sqft



Project: Nitesh Palo Alto,  
Location: Sarjapur Road  
Area: 1.03 Mn Sqft



# Premium Residential

---



Project: Nitesh Santa Clara  
Location: Bellary Road  
Area: 0.33 Mn Sqft



Project: Nitesh Caesar's palace  
Location: Kanakapura Road  
Area: 0.69 Mn Sqft



Project: Nitesh Columbus Square  
Location: Bellary Road  
Area: 0.56 Mn Sqft



Project: Nitesh Melbourne Park  
Location: Hennur Road  
Area: 0.82 Mn Sqft

---

# Hospitality Portfolio

# Hospitality Portfolio

---



The Ritz Carlton, Residency Road Bangalore

# The Ritz-Carlton Bangalore

---



# The Ritz-Carlton Bangalore

---





# Hospitality Portfolio

---



Proposed Wellness Resort, Goa\*

# Proposed Wellness Resort, Goa

---



# Proposed Wellness Resort, Goa

---



---

# Retail Portfolio

# Retail Portfolio – Shopping Mall

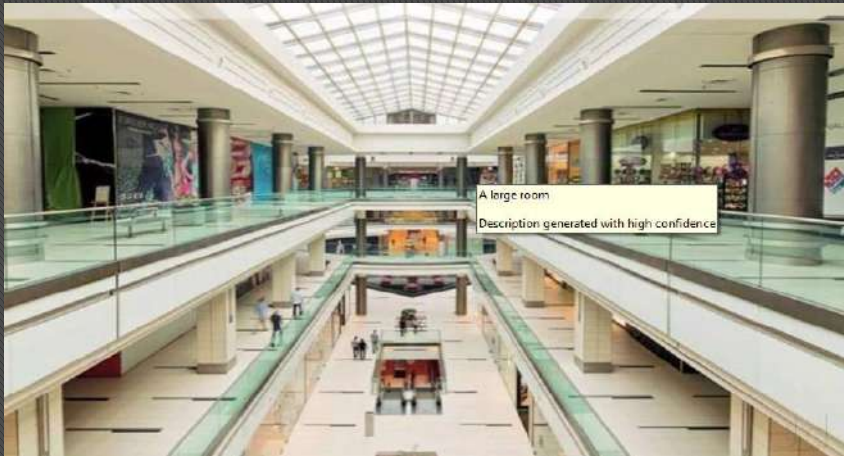


Nitesh Hub, Pune



# Retail Portfolio – Shopping Mall

---



# Index

---

1. Nitesh Estates: An Introduction
2. Our Brand
3. Awards
4. Our Business Principles
5. Our Partners
6. Board of Directors and Management Team
7. Lines of Business
8. Our Portfolio
9. **In Press**
10. Testimonials
11. Celebrities We are Associated with
12. Corporate Social Responsibility



# Nitesh Estates, ITC in JV for Rs100cr home project deal

10th April, 2006  
- Economic Times

Rajesh Unnikrishnan

MUMBAI

**N**ITESH Estates, the real estate arm of Banga-





## Nitesh Estates to develop a \$100 million hotel in Bangalore

18th January, 2007  
- Bias-blr

**BANGALORE:** Bangalore's real estate developers Nitesh Estates announced its partnership with New York-based Citigroup Property Investors to develop a \$100 million 250-room luxury hotel in the city.

Nitesh Estates managing director Nitesh Shetty said the hotel

destinations since May last and would invest another \$500 million during this calendar year on commercial space development, hospitality and residential projects, he added.

Speaking to Bangalore Bias, Nitesh said, "This hotel is going to



## Nitesh Estates to bring Ritz-Carlton to India

26th January, 2006  
- DNA - Mumbai

Ashish K Thakur  
Mumbai

In a market where most of the real estate firms are exploring the bottom end mid-segments of the hospitality pyramid, Bangalore-based Nitesh Estates has its eyes set on the top-end. Starting with Bangalore, the company plans to set up at least five high-end luxury properties across key cities.

Speaking exclusively to DNA News, Nitesh Shetty, managing director of the company, said, "We are in the final stage of negotiations to acquire real estate for our

projects. All the new hotels will be in the high-end five-star luxury category. We are already in discussions with operators of the world's top three hotel brands for a management contract. All I can say at this stage is that we will positively be introducing one of them through our flagship Bangalore hotel."

Owing to market lean, Nitesh Estates is close to or has already signed a management agreement to set up the first Ritz-Carlton hotel in the country. However, when asked, Shetty neither denied nor confirmed the development citing confidentiality clause as a reason. "We should be in a position to con-



firm anything on this in another 2-3 weeks," he said. To be located in central business districts, the hotels would be set up in the National Capital Region, Chennai, Kolkata and Pune besides the already-planned project on a 3-acre plot on the Residency Road in the

heart of Bangalore.

The nature of investment, size and branding of these hotels will depend on the availability of land and primarily on the international luxury brand that will manage the hotels. The total cost of the 250-room hi-end luxury hotel in Bangalore, for example, is pegged at Rs 400 crore (\$100 million) and will be positioned to redefine Nitesh's luxury hotel experience in the country.

In line with its positioning, the promoters have set aside over 20,000 sq ft to create retail space housing some of the most premium global luxury brands. The hotel will also feature a spa, which

would be managed by a leading British spa operator. The funding will be through a mix of debt and equity, said Shetty. In fact, the company has already instituted a special purpose vehicle for the Bangalore hotel wherein the US-based Citigroup is parting in the bulk of the equity proportion.

"Around 20-30% of the Rs 400 crore project cost will be through debt. Citigroup will finance the majority of the equity component and the balance will come from Nitesh Estates," said Shetty. Industry sources say Citigroup has already committed \$50 million as the first tranche of investment in the SPV.

# Och-Ziff to take 25% stake in Nitesh Estates for \$ 55 mn

17th December 2006  
- Economic Times

OCH-Ziff Capital Management Group, one of the top five global hedge funds with assets worth \$21 billion including investments in the UK football club Manchester United, is making its first investment in India. The New York-based hedge fund is close to picking up a 25% stake in the Bangalore-based realty company Nitesh Estates for \$55 million to



## FOREIGN PUSH

➤ Nitesh Estates is developing several projects including a

## Citigroup invests in Nitesh Estates

17th January 2007  
- Times Of India

Citigroup has entered into a partnership with Nitesh Estates, a realty firm, to build a 250-room luxury hotel in Bangalore. The hotel — to be built with an investment of \$100 million — will be operational in 30 months, Nitesh Shetty, MD, Nitesh Estates said. David Schaefer, MD and Head (Asia Pacific) Citigroup said, "We believe the real estate sector in Bangalore has tremendous growth potential."

## Nitesh Estates ropes in Shane Warne to endorse "Nitesh Forest Hills"

Nitesh Estates, the real estate division of the Nitesh Group, has announced the roll out of a brand-new gated township — Nitesh Forest Hills, with Australian cricketer and one of the greatest leg spin bowlers, Shane Warne endorsing the project.

Located in Whitefield, Bangalore, Nitesh Forest Hills aims at providing, not just better quality of construction, but also a better quality of life at these world-class homes of outstanding value. Built on an area of 7.3 acres, Nitesh Forest Hills is situated close to the Sai Baba Ashram and is a high-rise residential complex with options of two and three bedrooms.

At Nitesh Forest Hills one is bound to come across innumerable details that are meant to enrich one's living conditions, such as

and more IT and BPO companies reconsidering their decision and setting up shop in Bangalore, it is but natural that we start this project in Whitefield, one of Bangalore's prime locations today", said Nitesh Shetty, MD, Nitesh Estates. "Our core purpose — enrichment of the quality of life in our communities — has been,

24th March 2006  
- Deccan Herald

...successful with the success of all our real estate endeavors," he added.

Keeping pace with international trends, each home sports an open kitchen and each room is designed to maximise space utilisation and functionality. The host of facilities — including an in-house crèche, a dedicated children's play area featuring skating rings, cricket



Shane Warne

...live leisure club with an ar... Warne. Part

# Press

## Business Standard

### Kohli signed as brand ambassador of Nitesh Estates

IANS | Bengaluru January 21, 2016 Last Updated at 16:18 IST

Integrated property development firm Nitesh Estates on Thursday roped in star cricketer and captain of India's Test team Virat Kohli as their brand ambassador.

"I am proud to be associated with Nitesh Estates, as its brand ambassador. The company in many aspects reflects the values I hold in high esteem. I respect the fact that as a first generation company it has made extraordinary progress in a very short span," said Kohli.

### Nitesh Estates, Goldman Sachs to invest \$250 mn in realty projects

Realty player Nitesh Estates said it has tied up with global investment bank Goldman Sachs to jointly invest up to \$250 million in income generating commercial assets in the country. Besides this, Goldman Sachs has also committed \$37 million for the Bengaluru-based firm's acquisition of Koregaon Park Plaza, a one million sq ft operational shopping mall and future high-end office complex development in Pune. "This investment will accelerate our foot print across the country by providing capital where it is needed as well as through acquisitions of existing projects," Nitesh Estates chairman and MD Nitesh Shetty said.

### Nitesh buys Pune mall in ₹250cr deal

TIMES NEWS NETWORK

**Bengaluru:** Nitesh Estates, the Bengaluru-based property developer, has entered the Pune market by buying the one million sq ft, Koregaon Park Plaza Centre from Israeli firm Elbit Imaging for Rs 250 crore. Israeli billionaire Mordechai Zisser's diversified conglomerate Elbit Imaging Group, through its subsidiary Plaza Centers, operates a global portfolio of 37 retail assets in Central and Eastern Europe and India, under the same brand.

**TOI** was the first to report about the deal in September last year.

"Over the years, Pune has emerged as an important real estate market. We are delighted to acquire this top quality asset and build our shopping portfolio. Koregaon Park shopping mall is undergoing a refurbishment and will soon sport a new food court in addition to fine dining restaurants," said Ashwini Kumar, executive director & COO of Nitesh Estates. Property advisory firm JLL was the transaction adviser.



## 14 Special Feature Real Estate

THE ECONOMIC TIMES (MUMBAI) | FRIDAY | 11 MAY 2011

THE ECONOMIC TIMES  
**YOUNG LEADERS**

A fresh crop of entrepreneurs is attempting to give the much maligned real estate sector a credible and contemporary face. The language they speak – no cash payments, no delays, and investors matter – would have been unheard of in the property business a decade ago, writes Partha Ghosh

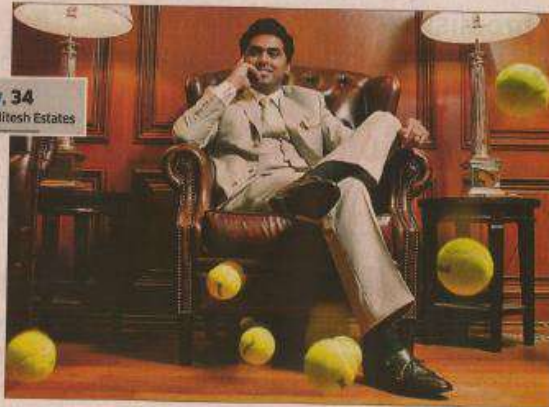
# Young, Bold & Hot Property

**BANGALORE**

**Nitesh Shetty, 34**  
Managing Director, Nitesh Estates

**STRATEGY**  
Joint development to get access to prime locations at low value

**LANDMARK PROJECT**  
Ritz Carlton Hotel, Bangalore (opening shortly)



**NEW DELHI**

**Vidur Bharadwaj, 45**  
Director, The 3C Company

**STRATEGY**  
Green Buildings, out-of-the-box designs which suit Indian conditions

**LANDMARK PROJECT**  
Delhi One in Noida, which will also house a Four Seasons hotel

## Real Estate's Newest Billionaire Bucks the Trend

**Vikas Oberoi, 41**  
Chairman and MD, Oberoi Realty

Net worth  
**₹5,800 crore**

**CLAIM TO FAME:** Second richest in Indian real estate amongst listed companies

**WHAT'S DIFFERENT ABOUT HIS COMPANY:** It is zero-debt, present in all market segments

**BUSINESS PHILOSOPHY:** Cash is King

**INSPIRATION:** Father, Basker Oberoi

**FAVORITE AUTHORS:** Malcolm Gladwell, Ram Charan

**HOBBIES:** Flying an airplane and playing the guitar

**If you decode gut feel, you get the wisdom that one earns from practice**

**KANVIR DATTA & KAILASH BABAR**

Vikas Oberoi is on a roll a few minutes before our meeting with him in his office in Mumbai.

31 March 2011, respectively. Oberoi Realty is listed so because of his "prudent and cautious" approach, says Oberoi. That's why it repaid entire debt of ₹1,000 crore in 2010.

# Press

THE ECONOMIC TIMES | Construction

## Nitesh Estates plans to acquire and develop 5 million sqft in coming years

BY SOBIA KHAN, ET BUREAU | UPDATED: MAR 30, 2017, 09.02 AM IST

Post a Comment

BANGALORE: Bangalore based luxury property developer [Nitesh estates](#)

**BSE 3.31 %** plans to grow its commercial and rental assets to more than 5 million sq. ft. of space.

THE FINANCIAL EXPRESS

### Nitesh Estates plans to move beyond Bengaluru

Real estate developer Nitesh Estates (NEL) is planning to move beyond its home turf Bengaluru to explore opportunities in Goa, Chennai and Kochi, and set up income-generating projects such as office space and malls. The move follows a \$300-million investment deal between Goldman Sachs and Nitesh Estates (NEL) to focus on income-generating assets to spur growth.

Currently, Nitesh Estates has 20 projects which a revenue potential of Rs 4,600 crore, Ashwini Kumar, executive director and chief operating officer, NEL told FE.

Nitesh Estates and global investment bank Goldman Sachs had sealed an agreement in May to jointly invest in income producing commercial real estate assets, namely, office buildings, shopping malls and luxury hotels across India. Under this arrangement, Goldman Sachs will make investments through Nitesh Estates SPVs, associates, subsidiaries and JVs. The partnership is a significant development and will increase the asset base of the company in next 3 to 5 years.

Copyright © 2015 - The Indian Express Ltd. All Rights Reserved

## B'luru realtors top the best practices chart

Bengaluru is the best market for property on a variety of metrics, according to a study of the top developers in India, reports **Avik Das**. Bengaluru developers take four out of the top five, and seven out of the top 20 spots in a rating that looks at ten "best practice" parameters, including functional professionalism and transparent deals. Sobha, Prestige, Embassy and Brigade feature in the top five; Godrej Properties, at No. 2, was the only non-Bengaluru developer here. Puravankara, Nitesh and RMZ feature in the top 20. Independent Delhi-based research centre and think-tank group Track2Realty looked at 100 leading developers across the country in its survey. **P 19**



## THE TIMES OF INDIA | Regional

### Lara Dutta launches Ritz-Carlton in Bangalore

TNN Nov 12, 2013, 02:41PM IST

The members of Bangalore's swish set kicked off the weekend in style, when they attended the launch of The Ritz-Carlton Bangalore. The hotel — which is owned by Nitesh Estates and is located on Residency Road — officially opened its doors to several of the city's A-listers on Friday night at an event hosted by Nitesh Shetty, founder and chairman of Nitesh Estates, along with his wife Sujata and Shane Krige, the general manager of the hotel. The chief guest for the event was Deepak Parekh. The evening began with Bollywood actress Lara Dutta introducing Nitesh, who thanked everyone on his team for making the hotel, which is the first Ritz-Carlton in India, a reality. Shane then came up and introduced a video that chronicled the various stages of the hotel's construction and the orientation process that the employees underwent before the launch. Later, Lara introduced Cyrus Broacha, who did a quick stand-up routine in which he took digs at everyone from Manmohan Singh to Sachin Tendulkar. Actor Boman Irani came onstage and chatted with Cyrus about his journey from managing a chips stall to being one of Bollywood's most popular character actors. He ended the session by singing Frank Sinatra's My Way. Everyone then headed off for dinner, where they spent the rest of the evening sampling the various cuisines that the hotel's chefs served up. Also spotted at the event were tennis player Mahesh Bhupathi and sports commentator Charu Sharma, as well as Deepak Parekh, Sujata Shetty, Sonjoy Chatterjee, Avinash Vashisht, Kavita Sabharwal, Vinita Chaitanya, Jaya Virwani and Ila and Vinod Naidu.



# Index

---

1. Nitesh Estates: An Introduction
2. Our Brand
3. Awards
4. Our Business Principles
5. Our Partners
6. Board of Directors and Management Team
7. Lines of Business
8. Our Portfolio
9. In Press
10. **Testimonials**
11. Celebrities We are Associated with
12. Corporate Social Responsibility



## Testimonials

- “Nitesh Canary Wharf, is a beautifully appointed place to live. The location and views offer the energy of urban living at its best. With scrupulous attention to detail, Nitesh Canary Wharf is everything I had imagined. Great flat, fantastic location, fabulous private terrace, plenty of open spaces, highlighted by upscale finishes throughout.”  
**- C. Jayaram – Executive Director Kotak Mahindra Bank Ltd.**
- “Nitesh Estates has built a beautiful hotel and the property looks great. The food and ambience was very nice. I wish them all the very best in their future endeavours.”  
**- Deepak Parekh – Chairman, HDFC Limited**



## Testimonials

- “I would like to congratulate Nitesh Estates for the fantastic hotel that they have built – I enjoyed my stay at the Ritz-Carlton Bangalore immensely.”
  - **Sachin Tendulkar – Iconic Indian Cricketer**
- “For my wife and me, our apartment at Nitesh Buckingham Gate is truly a dream come true. It symbolizes our “Indian dream”. Our apartment is beautifully designed with very high quality bathroom fittings and marble flooring. Each room is large with spacious balconies and big French windows that allow plenty of natural light and fresh air into our home.”
  - **Rajeev Rastogi – Director, Yahoo India.**

## Testimonials

- “The location of the Nitesh property on M.G. Rd together with the ambience, facilities has not only value added to our work culture in India, but is at par with our work places around the globe.”
  - **Dr. Ferzaan Engineer – CEO, Quintiles – No.1 Pharma Research Company in the world**
- “I must compliment Nitesh and his team for a job well done! I am very glad to have made the decision to buy an apartment in this project, which I am sure has already made a name for itself in Bangalore.”
  - **Venkatesh Mysore – Vice President and Country Head, India of Sun Life Financial – Asia**

# Index

---

1. Nitesh Estates: An Introduction
2. Our Brand
3. Awards
4. Our Business Principles
5. Our Partners
6. Board of Directors and Management Team
7. Lines of Business
8. Our Portfolio
9. In Press
10. Testimonials
11. **Celebrities We are Associated with**
12. Corporate Social Responsibility



# Nitesh Estates

---

**“I am a fan of Nitesh Estates”**



"I am a fan of Nitesh Estates. Attention to detail and perfection are consistent standards of any Nitesh Estates Property" –  
**Virat Kohli - Cricketer**



"I am a fan of Nitesh Estates. I love Nitesh Estates because their properties spell class.." –  
**Mandira Bedi, Actress & TV Host**

# Nitesh Estates

## “I am a fan of Nitesh Estates”



"I am a fan of Nitesh Estates as they give the city stunning landmarks."-  
**Diana Hayden, Former Miss World 1997**



"I am a fan of Nitesh Estates because... Just not give houses They deliver your dreams."-  
**Raveena Tandon, Actress**

# Nitesh Estates

---

**“I am a fan of Nitesh Estates”**



Sonam Kapoor at Ground Breaking  
at Nitesh Hub



Chitragada Singh at Ground  
Breaking at Nitesh Napa Valley

# Nitesh Estates

---

**“I am a fan of Nitesh Estates”**



“The premiumness, the quality of my flat at Nitesh Wimbledon Park is phenomenal and the ability of the team at Nitesh Estates to surpass our expectations every time is beyond compare.” – Mahesh Bhupati



Sania Mirza laid foundation stone of Nitesh Forest hills, Whitefield

---

# Green Buildings



## Green Buildings

Nitesh Estates is one of India's first development companies to recognize and embrace the importance of going green. We recognized very early the impact of green buildings on the environment and brought **"Green Architecture"** that works in harmony with natural features and resources to maximise efficiency of many of our projects. A couple of projects have been awarded the Gold pre-certification from Indian Green Building Council (IGBC) Green Homes Rating.

## Green Buildings



---

# Asset Management

## **Asset Management**

At Nitesh Estates, the comfort and well being of our customers is paramount and our inherent quality of giving our undivided attention to detail has only ensured that our customers get nothing but the best.

## Asset Management



# Index

---

1. Nitesh Estates: An Introduction
2. Our Brand
3. Awards
4. Our Business Principles
5. Our Partners
6. Board of Directors and Management Team
7. Lines of Business
8. Our Portfolio
9. In Press
10. Testimonials
11. Celebrities We are Associated with
12. **Corporate Social Responsibility**

## Corporate Social Responsibility



Nitesh Estates has contributed generously for Ekam to fulfil their dream of reducing infant mortality rate and improving healthcare outcomes for neonatal, infants and children.



Nitesh Estates is vocal about women empowerment through providing them education and infrastructure – collaborating and providing financial aid to Cherysh was a clear route to enable this vision.



Nitesh Estates provides financial aid to build a platform for various budding artists through the Convention/cultural Centre in Mumbai. It promotes Indian performing arts and plethora of cultural activities.

Nitesh Estates

---



Thank You

